

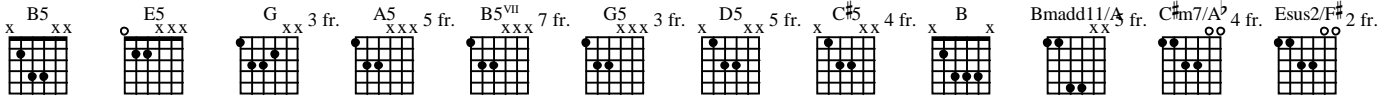
MOTHER

As recorded by Danzig

(From the 1988 Album DANZIG)

Transcribed by Rhett Cutshaver
(NyteCrawler)

Wor
Mus



A Intro

Moderate Rock ♩ = 128
B5 G A5 B5 G A5 B5

The first system of the Intro. The top staff is a treble clef with a key signature of one sharp (F#) and a 4/4 time signature. It contains a melodic line with notes G4, A4, B4, G4, A4, B4, G4, A4, B4. The bottom staff is a guitar tablature with strings T, A, B. The fret numbers are: T: 0, 0, 0, 0, 0, 0, 0, 0, 0; A: 4, 4, 4, 4, 4, 4, 4, 4, 4; B: 2, 2, 2, 2, 2, 2, 2, 2, 2. Chord changes are indicated by the letters B5, G, A5, B5, G, A5, B5 above the staff.

The second system of the Intro. The top staff continues the melodic line with notes G4, A4, B4, G4, A4, B4, G4, A4, B4. The bottom staff continues the guitar tablature. Chord changes are indicated by the letters G, A5, B5, G, A5, B5 above the staff.

B Verse 1 "Mother..."

G A5 B5 G A5 B5

The first system of Verse 1. The top staff is a treble clef with a key signature of one sharp (F#) and a 4/4 time signature. It contains a melodic line with notes G4, A4, B4, G4, A4, B4, G4, A4, B4. The bottom staff is a guitar tablature with strings T, A, B. The fret numbers are: T: 0, 0, 0, 0, 0, 0, 0, 0, 0; A: 4, 4, 4, 4, 4, 4, 4, 4, 4; B: 2, 2, 2, 2, 2, 2, 2, 2, 2. Chord changes are indicated by the letters G, A5, B5, G, A5, B5 above the staff.

13

G A5 B5 G A5 D5 B5

T
A
B

Gtr II *let ring-----*

T
A
B

C Verse 2 "Mother, can you"

17

B5 D5 G A5 B5 D5 G A5 B5

T
A
B

T
A
B

D Chorus 1 "Not about to..."

21

$\text{♩} = 134$
G5 A5 B5 N.C. B5 A5

Gtrs I, II

T
A
B

25 G5 A5 B5 A5 G

T
A
B

29 G5 G A5 B5 N.C. B5 A5

T
A
B

33 G5 A5 F#5 N.C. B5

P.M.-----|

T
A
B

E Verse 3 "Mother...tell your"

37 B5 N.C. G A5 B5 N.C. G A5 B5

$\text{♩} = 136$

T
A
B

Gtr II

T
A
B

♩ = 138 ♩ = 140

B5 N.C. G A5 B5 N.C. G A5 B5

41

T
A
B

T
A
B

♩ = 142 ♩ = 144

B5 N.C. G A5 B5 N.C. G A5 B5

45

T
A
B

T
A
B

♩ = 147

B5 N.C. G A5 B5 N.C. G A5 B5

49

T
A
B

T
A
B

F Chorus 2

$\text{♩} = 151$
G5

53

G5 A5 B5 N.C. B5 A5

Gtrs I, II

57

G5 A5 B5 N.C. B5 A5 G5

61

G5 G A5 B5 N.C. B5 A5

65

To Coda

G5 N.C. A5 N.C. B5

P.M.-----|

G Guitar Solo 1

Gtr II
B5

69

G A5 B5^{VII}

Full Full Full

B5 G5 A5 B5 F# G5
8va
59fr.

71

Full 3/4 Full 1/4 1 1/4 Full N/H. Full

T 7 10 10 (10) 10 7 10 (10) 7 (10) (10) (10) (10) (10) [7] 14 16 15 17 17

A 9 9

B

P P H H

A5 B5 G5 A5
D.S. al Coda

74

Full 3/4 1 1/4 Full let ring Full Full

T 17 17 17 17 17 17 17 17 15 17 17 15 16 19 19 24 (24) 24 (24)

A

B

P

Gtr II A5 B5
62fr.

Gtr I

78

Full

T

A

B

H Outro

$\text{♩} = 160$

B5 G5 A5 B5

81

let ring Full Full Full 1/2 Full

P P P sl. sl.

D5 C#5 B5

84

P H P P Full Full

G5 A5 B5 D5 C#5 8va

86

Full 3/4 Full Hw2l Full Full Full

sl. P sl.sl.

B5 8va

89

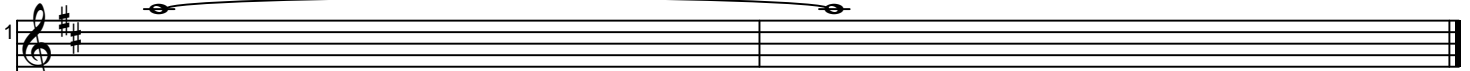
H P H P H P H P

Guitar tablature system 1 (measures 90-91). Chords: G5, A5, B5, D5. Includes treble clef, staff with notes, and a 6-string guitar staff with fret numbers and picking notation (H, P, sl.).

Guitar tablature system 2 (measures 92-93). Chords: C#5, B5. Includes treble clef, staff with notes, and a 6-string guitar staff with fret numbers and picking notation (P, H, P, sl.).

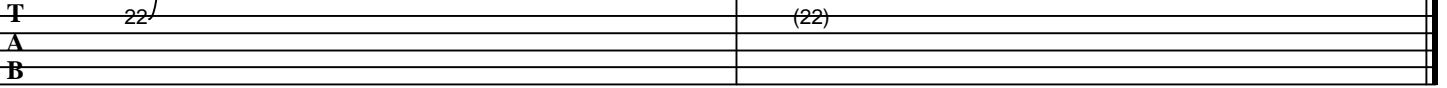
Guitar tablature system 3 (measures 94-95). Chords: G5, A5, D5. Includes treble clef, staff with notes, and a 6-string guitar staff with fret numbers and picking notation (sl., H, P, P).

E#7sus4 δva C#m7/A^b Esus2/F#



Full

A.H.



B



Gtr II

